

# HY-02 Air Cushion Machine Operation Manual



*Please read the instruction manual carefully before installing and using the product, and keep it properly.*

## 1.0 About Operation Manual

**This manual for HY-02 Air Filling Machine**

**This manual wrote for identify the machine parts location, interpret the system's operation and solve solution for basic malfunction.**

Special Symbol's Definition and Suggestion:



"Lightning Flash" Symbol: Not insulated parts inside the machine, touch may cause electric shock.



"High temperature danger" Symbol: remind the operator of high temperature danger and do not touch it



"Hand clamping" Symbol: remind the operator to be careful of hand clamping during machine operation.

## 2.0 Instructions for safe use

**2.1 Please read carefully and understand completely all the information of this manual.**

**2.2 Please confirm the following matters before operate system:**

- The authorized dealer or technicians has provided complete training to the operator.
- The operator has read and understood all the safety signs posted on the device.
- Confirm the air filling machine power part--the power source meet the demand of machine, and use with grounding device.



**Warn:** Improper grounding may cause electric shock



**Warn:** DO NOT open the machine cover. the cover disassemble should done by authorized technicians and technician trained maintenance personnel

**⚠ Warn:** Be careful of rolled into the machine! when machine start to work like pull the film,inflate the film or sealing, please keep finger, hair, jewelry, and clothes away from the sealing roller.

**⚠ Warn:** Be careful of scalded, pay attention to the surface of the sealing roller, high temperature sealing line may cause scalded!

### 2.3 Please confirm the following matters before maintain and repair equipment:

- ◆ Power off the system's power source and plug off the power source
- ◆ Noted: HY-02 air filling machine only can used for our company's film. if use with the film not provided by our company, we have right terminate the maintenance services immediately and stop supply all the film and relative use material.

**⚠ Warn:** Except the description of this manual's "Maintenance&Repair", please do not attempt to repair or modify the machine. Repair should be carried out by representatives of our company, authorized distributor or professional maintenance personnel trained by our company.

**⚠ Warn:** Please do not open the belt cover except for execute the belt replacement of this manual.

### 2.4 Check the equipment regularly to ensure

- The wires of all parts is not scratched, damaged and broken.
- No debris remains on the belt
- All control parts and display unit is operating normally.

**⚠ Warn:** Any inconsistent system description to the manual during use,please turn off the system immediately, unplug the power plug and contact our technical service representative.

### 2.5 Noise

The max. running noise of air filling machine is 95 decibels, Please confirm if this value available for the standards of local regulations.

### 2.6 Environmental Conditions

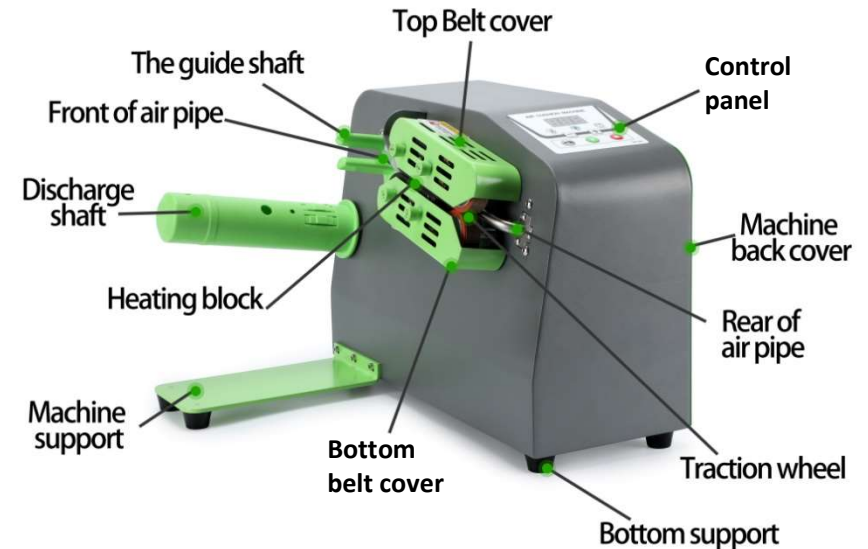
- Storage temperature: Machine:0-43℃; Film: 0-43℃
- Operating temperature: Machine 16-43℃; Film: 16-43℃

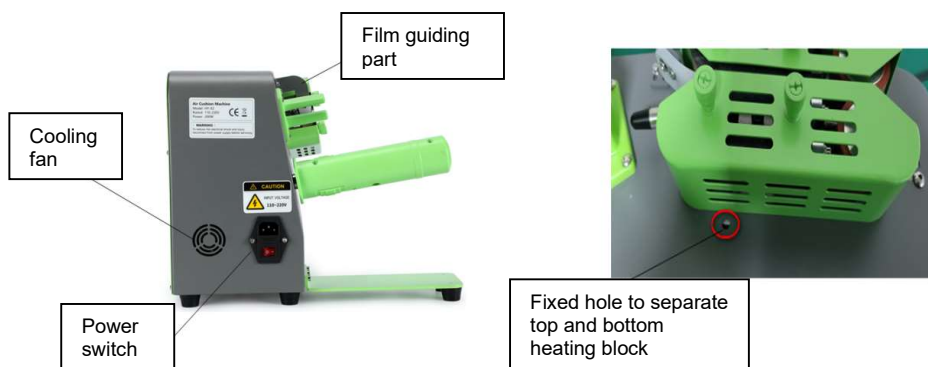
**⚠ Warn:** The film can only work well(good seal effect) when placed at the above temperatures parameter range, if storage in the environment exceed/below above temperature range, might caused the film broken.

### 2.7 Potential risks

Even though most parts of the machine equipped with belt cover, still some parts not been covered, please be careful during operation.

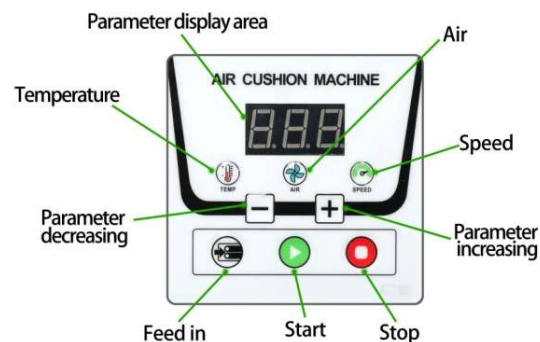
## 3.0 Full Figure





## 4.0 Operation panel view and key function description

### 4.1 Control panel



## 5.0 Specification:

### 1. Appearance

Dimension: 400MM\*370MM\*300MM(L\*W\*H)  
 Package Dimension: 460MM\*325MM\*360MM (L\*W\*H)  
 Net weight: 9KG  
 Gross weight: 10KG

### 2. Electrical performance

Model: HY-02  
 Rate power: 150W  
 Power connection: Y  
 Heat seal temperature: Level 001-175 adjustable  
 Speed: Level 001-100 adjustable (max 16m/min)  
 Air flow speed: Level 001-100 adjustable

Input voltage: Compatible with AC110-220V  
 Rate frequency: 50HZ/60HZ  
 Electric Shock Protection Class: I

## 6.0 Packing list:

Name	QTY
Discharge shaft	1 pc
Power cord	1 pc
Allen wrench	4 pcs
Wheel ring	2 pcs
Spare belts	2 pcs
High temperature resistant tape	1 roll
Blades	2 pcs
Host	1 pc

## 7.0 Installation instructions:

7.1 Install the discharge shaft to the position shown in the IMG 1. (Auxiliary tool: Allen wrench)

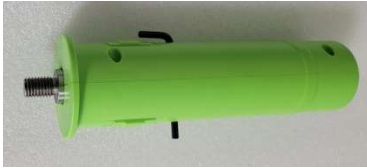
7.1.1 Take out the largest size allen wrench



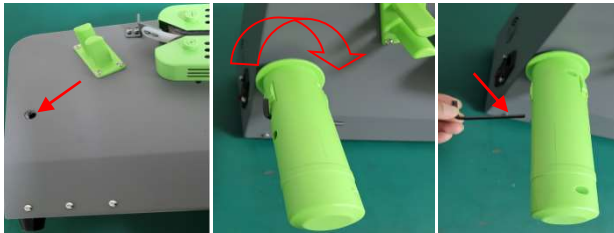
7.1.2 Rotate the screw rod to align the inner hole in the iron rod with the outer hole in the plastic case



7.1.3 Insert the largest allen wrench into the hole



7.1.4 Put the screw rod into the installation position; turn it clockwise until it is tightened; pull out the Allen wrench, and the discharge shaft is installed.



## 7.2 Machine operation instruction

7.2.1 Insert the power cord into the power socket of the machine, turn the switch to the "I" position to turn on



7.2.2 Put the film on the discharge shaft(Please remind the air entry port must be on the side of machine)



7.2.3 Thread the film into the air pipe



7.2.4 Pull the film forward with your left hand, press the “IN” button with the right hand (left and right hands simultaneously), until the film is pulled flush with the machine edge or beyond the machine.



7.2.5 After adjusting the parameters according to different type of film (recommended parameter settings, please refer to 8.0), press the start button to start inflation.



## 8.0 Recommended parameters:

### 8.1 Recommended parameters for air pillow roll:

Recommended parameters for air pillow roll			
Film Thickness	Temperature	Speed	Air
15um	113	80	30
18um	115	80	30
20um	120	80	30
25um	125	80	30

### 8.2 Recommended parameters for air bubble roll:

Recommended parameters for air bubble roll			
Film Thickness	Temperature	Speed	Air
15um	113	70	100
18um	115	70	100
20um	120	70	100
25um	125	70	100

#### **Attention:**

*The above is only the basic parameter recommendation. Different types of films have different parameters, and the ambient temperature is also a variable. There are no fixed standard parameters for the speed, air and temperature, which need to be adjusted and recorded in daily use.*

## 9.0 Common faults and treatment:

Fault Phenomenon	Solution
The film doesn't move forward	1. If air parameter setting is too large, will make the film get stuck, please reduce parameter of air to solve it.
	2. Check whether the blade for rusty or chipping, or loose, if so please replace the blade or tighten the blade set screw.
	3. Check whether there are any debris on the traction wheel and belt, if yes then clean it.
Sealing line is broken (temperature is over high)	Reduce the temperature
Air leakage, the film is not sealed properly	Increase the temperature
The film came out of the machine	Reduce the air
Belt slipping	Check whether there are any debris on the traction wheel and belt, if yes then clean it.
the power switch light is on but the display screen is not on	Check whether the emergency stop switch is turned on, if yes, then pull it up to close it

If the fault cannot be repaired, please contact an authorized dealer or engineer for further processing.

## 10.0 Attention

**10.1 Do not use in a humid environment.**

**10.2 Please pay attention to the following points before operation:**

- If the system is not properly grounded, it may cause electric shock.
- Do not open the protective or access cover. Only authorized manufacturers or authorized dealer service personnel can open.
- Keep your fingers, hair, clothing and jewelry away from the traction wheel when in operation or loading materials, to avoid getting caught.

**10.3** Inflatable bags are only used as packaging materials. It is prohibited to use as floating devices, pillows, children's toys, etc.

**10.4** This inflator should not be loaded with more than 7KG of materials. It is forbidden to press heavily when loading materials, and forbidden to lean on.

**10.5** When the machine is working, static electricity is generated, and the material also has static electricity. Therefore, the operator cannot wear slippers or barefoot, otherwise the human body will become a conductor of static electricity, which will cause the discomfort of being shocked.

**10.6** If the machine is used for a long time, and the film fails to run smoothly or gets stuck, please replace the blade in time.

**10.7** In the process of using the machine for a long time, if the sealing edge is not firm, or the sealing is damaged, please check whether the temperature is correct and whether the tape is damaged. If there is any damage, please replace it in time.

**10.8** Please don't start the machine when no material.

**10.9** There is a grounding wire inside the machine, please use a single-phase three-wire power cord. The power grid of the user must have a reliable grounding device, otherwise the static electricity cannot be discharged, and the human body will become a conductor of static electricity discharge, which will cause the discomfort of electric shock.

## 11.0 Film Choosing & Storage (Air bubble film and air pillow film)

**11.1** Please use the film produced by our company, if not, may cause broken bag problems or influence the effect of the packing bag, and even damage the machine.

**11.2** The recommended storage temperature for the membrane is 0-43℃. If it's not within this temperature range, may influence the performance of the film.

**11.3** The recommended ambient temperature for use is 16-43℃. If it's not within this temperature range, may influence the performance of the film.



# 12.0 Maintenance & Repair

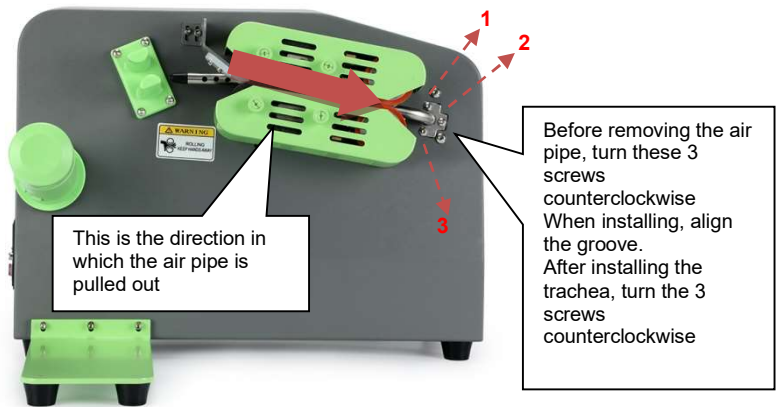
## 12.1 Preventive maintenance

Before maintain or repair the machine, please do remember turn off the machine, and unplug the main power cord from the socket

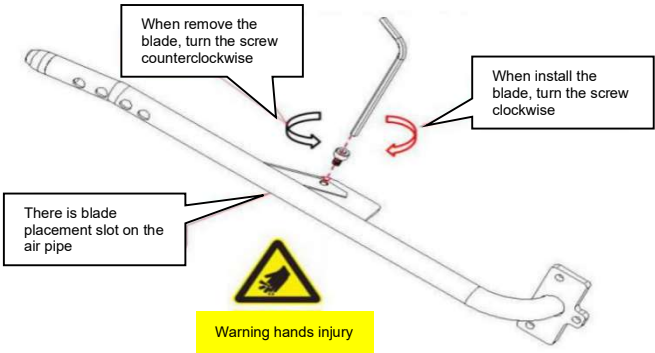
Maintenance cycle	Project	Description
Monthly	Check& clean	1.Open the machine belt cover and blow out the dust and debris inside; 2.Check the machine parts for abnormal wear; 3. Clean and remove the dirt and dead glue on the wheel and belt.
Yearly	Contact	1.Schedule an on-site inspection; 2.Contact the authorized dealer, or contact the company's technical service representative to check the equipment.

## 12.2 Blade replacement

12.2.1 Use an Allen wrench to remove the 3 fixing screws at the end of the air pipe, pull out the pipe in the direction of the arrow, loosen the screws that fix the blade, replace the blade with a new one and put the air pipe back in place

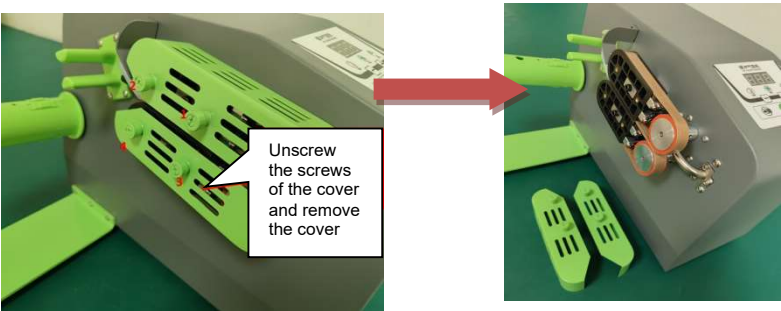


12.2.2 When remove the blade, turn the screw counterclockwise;  
When install the blade, turn the screw clockwise  
There is blade placement slot on the air pipe to ensure the correct position.

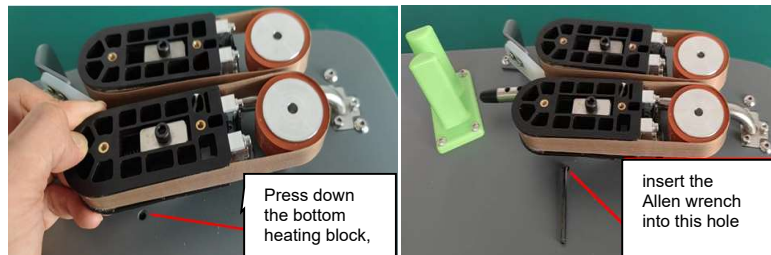


## 12.3 Belt replacement

12.3.1 Loosen the anti-lost screw of the protective cover and remove the cover



12.3.2 Firstly, press down the bottom heating block, and insert the Allen wrench after the inner and outer holes are aligned.



Secondly, push the heating block in the direction of the arrow (if it cannot be pushed, loosen the fixing screw on the black block) , to remove the belts. After replacing the belt, replace the screws as they are, remove the wrench which is inserted at the beginning, and install the top and bottom covers



## 12.4 High Temperature Tape Replacement

12.4.1 Loosen the screws and remove the belt cover; fix the position of the bottom heating block with an Allen wrench so that the upper and lower heating blocks are separated.

Use an Allen wrench to loosen the screws and pressing pieces in the middle of the heating block; remove the heating block (note that the spring may bounce off). Tear off the old high-temperature tape and replace it with a new one, and then install the heating block, belt and belt cover back to their original positions in turn.

